



# GMT MONTHLY MEMBERSHIP PROGRESS REPORT

Results as of: 4/30/2017

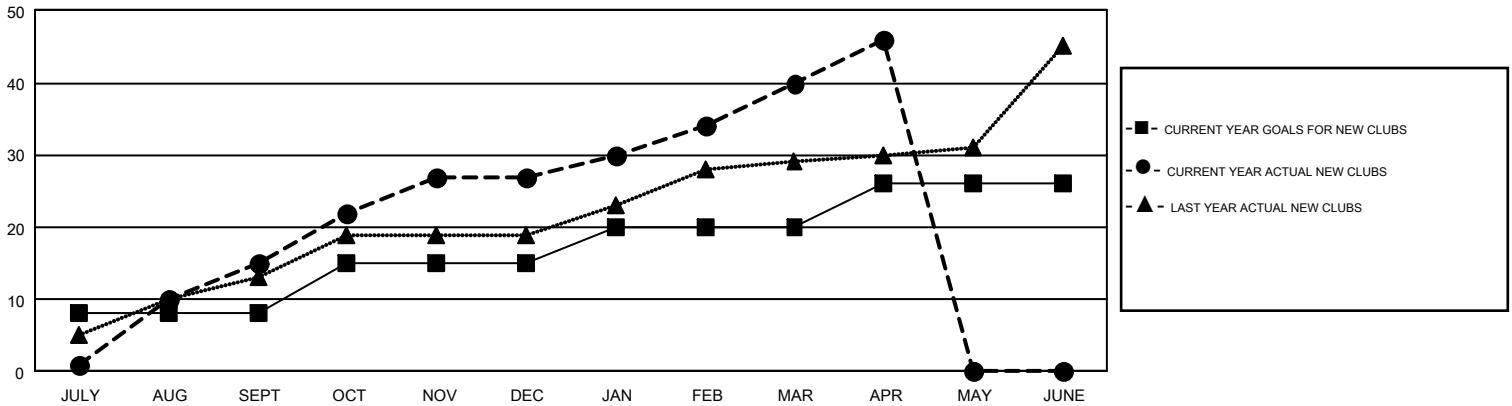
## GMT Constitutional Area 7, Group C

GMT: JUSWAN TJOE

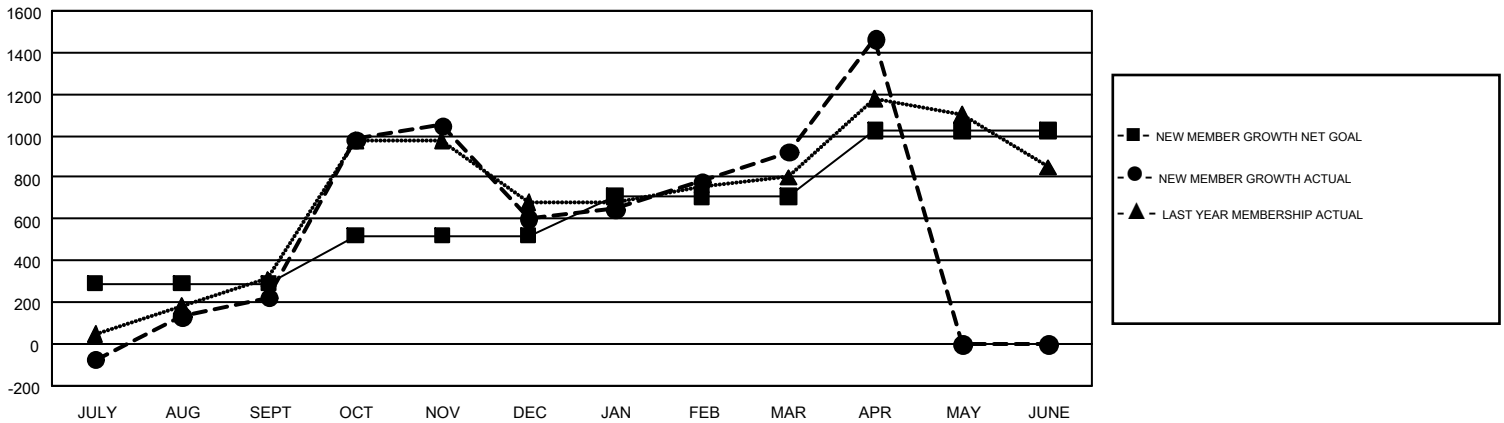
REPORT DOES NOT INCLUDE CLUBS IN UNDISTRICTED AREAS.

Clubs				Members			
RESULTS FOR 2016-2017				RESULTS FOR 2016-2017			
QUARTER	NEW CLUB GOAL	NEW CLUBS	DROPPED CLUBS	QUARTER	NEW MEMBER GROWTH NET GOAL (not reinstated or transfers)	NEW MEMBER GROWTH ACTUAL (not reinstated or transfers)	DROPPED MEMBERS ACTUAL (including transfers)
JULY/AUG/SEPT	8	15	4	JULY/AUG/SEPT	290	641	419
OCT/NOV/DEC	7	12	10	OCT/NOV/DEC	230	1,070	691
JAN/FEB/MAR	5	13	1	JAN/FEB/MAR	190	489	168
APR/MAY/JUNE	6	6	0	APR/MAY/JUNE	315	607	61

GOALS AND ACTUAL NEW CLUBS CUMULATIVE



GOALS AND ACTUAL MEMBERS CUMULATIVE



DROPPED CLUBS: 15	247 CLUBS OF 339 ADDED 1 OR MORE NEW MEMBERS	<b>GENDER DISTRIBUTION</b> MALE 4,557 (46.46%) FEMALE 5,252 (53.54%)
<b>DROPPED MEMBERS</b> DECEASED 20 CLUB CANCELLED 152 OTHER 1,167 <b>TOTAL 1,339</b>	<a href="#">CLICK HERE FOR CUMULATIVE MEMBERSHIP DATA</a>	TOTAL FAMILY UNIT MEMBERS 2,142 FAMILY MEMBERS PAYING HALF DUES 1,164